

PERFECTA-IP 64 M

Alarm control panel

The **PERFECTA-IP 64 M** alarm control panel is designed to protect various premises such as flats, single-family houses, terraced houses, offices, etc. It provides protection as required by EN 50131 for Grade 2. The control panel is simple to configure as well as easy and intuitive to operate using keypads, including touchscreen models. Functionalities of the alarm system can also be controlled remotely using the **PERFECTA CONTROL** mobile application and remote control keyfobs.

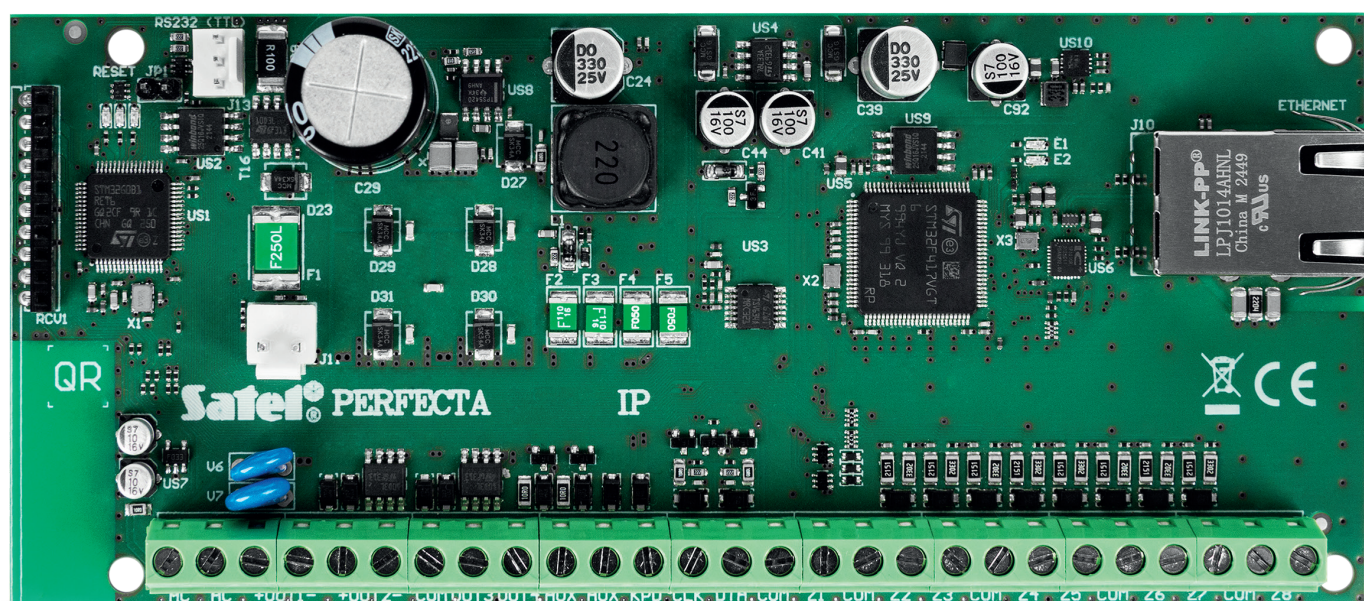
The PERFECTA-IP 64 M control panel makes it possible to create wired and wireless systems – you can connect to it an **ABAX 2** system controller (**ACU-220** or **ACU-280** operating in the frequency band of 868 MHz) or **PERFECTA-RF**, i.e. the **MICRA** wireless system module (frequency band of 433 MHz). Alternatively, the **INT-RX-S** keyfob receiver expansion module may be connected to the control panel.

The PERFECTA-IP 64 M control panel is equipped with an Ethernet communication module. This feature enables the use of a mobile application with push notifications support, remote configuration of the system using the **PERFECTA Soft** program and event reporting (e.g. to a security agency monitoring station).

The control panel electronics board is provided with 8 wired zones and 4 wired outputs. Their number can be increased by connecting the **INT-E** zone expansion module and **INT-O** or **INT-ORS** output expansion module. Owing to this, it is possible to expand the system by adding more detectors, sirens, or even actuators (to control the garage door, roller shutters, garden sprinklers). The control panel may also be connected to the **INT-CR** proximity card arm/disarm device. This allows one to control selected system functionalities with proximity cards and tags.

A system based on the PERFECTA-IP 64 M control panel can be divided into four partitions with a choice of three arming modes (day, night or full). Such partitions may be independent of each other or may feature common sections (specified zones).

The system can be configured in two ways: from a computer with the PERFECTA Soft program installed (locally – connection via RS-232 (TTL) port, remotely – via Ethernet), as well as from a keypad.



- compliance with **EN 50131 Grade 2**
- system division into 4 partitions:
 - » 3 arming modes in each partition
 - » option to assign a zone to 1~4 partitions
 - » user-controlled or timer-controlled
- 8 wired programmable zones on the control panel mainboard:
 - » configuration options: NO, NC, EOL, 2EOL/NO, 2EOL/NC
 - » support for roller shutter and shock detectors
- up to 64 programmable zones
- support for "IP zones" - receiving HTTP notifications sent by IP cameras or other IoT devices
- 4 wired programmable outputs on the control panel mainboard:
 - » 2 high-current outputs
 - » 2 OC-type low-current outputs
- up to 64 programmable outputs (including 4 dedicated outputs to control sirens of the **MICRA** system)
- built-in modules:
 - » Ethernet module (reporting to monitoring station, mobile application, PUSH notifications)
- communication bus for connecting:
 - » **INT-TSH210, INT-TSH2R, INT-TSG2R, INT-KSG2R, PRF-LCD** keypads
 - » **INT-E, INT-O, INT-ORS** expansion modules
 - » **ABAX 2** wireless system controllers: **ACU-220** or **ACU-280***
 - » **INT-RX-S** keyfob receiver expansion module*
 - » **INT-CR, INT-IT2** proximity card arm/disarm devices
- communication interface for connecting the **PERFECTA-RF** – MICRA wireless system module*
- maximum number of supported wireless devices:
 - » **ABAX 2** system: up to 4 keypads / up to 48 detectors, sirens or other devices
 - » **MICRA** system: up to 4 keypads / up to 64 detectors / up to 4 sirens
- support for wireless keypads:
 - » **PRF-LCD-A2** – in the **ABAX 2** system
 - » **PRF-LCD-WRL** – in the **MICRA** system
- system control using:
 - » keypads
 - » **PERFECTA CONTROL** mobile application
 - » remote control keyfobs
 - » proximity cards and tags
- local or remote software (firmware) updates
- passwords:
 - » 62 user passwords
 - » 1 service password
- editable names (of users, partitions, zones, outputs and modules) for easy control and supervision of the system
- 8 timers with exceptions setting capability
- 8 thermostats
- memory for 3584 events
- automatic diagnostics of the system main components
- built-in switching power supply:
 - » over-current protection
 - » battery deep discharge protection
 - » battery charging current control
- programming of control panel settings:
 - » locally – a keypad or computer with the PERFECTA Soft program installed, connected to the control panel RS-232 (TTL) port
 - » remotely – a computer with the PERFECTA Soft program installed, connecting to the control panel via Ethernet

**NOTE – it is possible to connect only one of the above-mentioned devices: ACU-220/ACU-280 controller, PERFECTA-RF module or INT-RX-S keyfob receiver expansion module. The system cannot use wireless ABAX 2 and MICRA devices simultaneously.*